

## STYLE TRADITIONAL FARMHOUSE

A subtle mix of hand-painted and pine furniture tops off the kitchen in the Hooles' period home

# COUNTRY CREAM

Owning a home built in the 1890s, it was clear which way Janette and Anthony Hoole were going to go when it came to designing their new kitchen. 'I didn't want anything too modern because it had to wear with the house and it had to be something we could live with, too,' explains Janette, who used to sell kitchens herself.

The couple's Victorian house in Nottinghamshire boasted a wealth of character and the kitchen was no exception, something on which the Hooles were keen to capitalise. 'I wanted the new kitchen to look as if it had always been here,' recalls Janette. They were happy to see the back of the old faux-limed cabinetry and set about creating a more practical layout.

Shopping around, Janette found it difficult to find a designer who was willing to create a bespoke scheme that would fit in with the house. 'It was my stepson who introduced me to Hill Farm Furniture

and immediately after talking with designer Mike Ashwin I knew I didn't need to look any further,' says Janette.

Making the most of the space was a priority for the Hooles and one of the first things that Mike suggested was to create a utility room that would free up extra space in the kitchen. Janette's desire for an Aga dictated much of the design because of its size. 'I loved the idea of a mix of painted and wooden cabinetry and the Aga played quite a big part in the decision to go for this style of kitchen,' recalls Janette.

Mike designed a layout incorporating a mix of freestanding and fitted furniture topped off with red granite and warm solid oak. A dresser opposite the Aga balances the room while a country-style dining table in the centre completes the cosy look. 'Mike is a craftsman and he spent so much time getting to know us that we were confident he would get it right and he did,' smiles Janette. **BK**

◀ A ceramic double sink is invaluable to Janette and adds to the traditional feel. To avoid unnecessary trips to the utility room, Mike incorporated a small fridge in the design

Inspired by the room's lofty proportions and its Victorian coving, the kitchen by Hill Farm Furniture takes on a traditional feel with bespoke cabinetry and a mix of rustic hues. To tie it all together, Janette chose Mayfair Linen from Dunelm Mill to dress the window while the walls are painted in neutral Green Ground by Farrow & Ball





6 My best buy was the dining table. I bought it for our last kitchen from the local paper for £50, but updating it with the same paint colour as the cabinetry and changing the tabletop to match the granite means it fits in perfectly 9

JANETTE HOOLE



## DESIGN & CABINETRY

- Mike Ashwin at **Hill Farm Furniture**, Lodge Farm, Clensey Lane, Dry Doddington, Nr Newark, Nottinghamshire NG23 5HT (01636 626063) [www.hillfarmfurniture.co.uk](http://www.hillfarmfurniture.co.uk)
- Bespoke Quebec Yellow pine furniture with hand-painted Quebec Yellow pine cabinetry and glass units

## WORKTOPS

- Red Multi granite, Stoneworks of Newark. Price per linear m **£250**
- 40mm solid oak. Price per sq m **£350**

## SINK & TAP

- RF0800 Farmhouse undermounted double-bowl ceramic sink, Regis **£280**
- 4193NIWPC Ionian monobloc mixer tap in nickel with deck-mounted porcelain levers, Perrin & Rowe **£210**

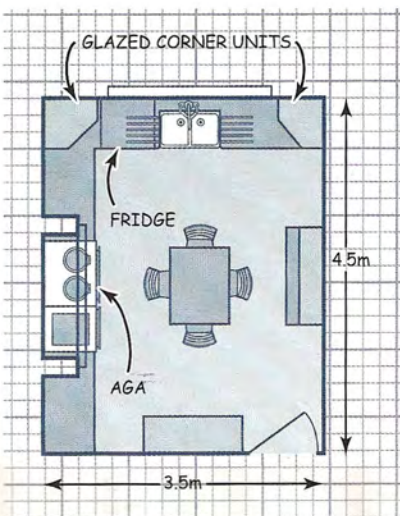
## APPLIANCES (shown)

- Four-oven, oil-fired Special Edition Aga in cream, from **£7,575**
- Existing freestanding microwave, for similar try NNE255WBBPQ, Panasonic **£69**
- K4316 fully integrated fridge, Neff **£321**

## APPLIANCES (not shown)

- Fully integrated dishwasher, Neff **£525**

☎ For stockists, see page 146



## GUIDE PRICE

- Starting price for a Hill Farm Furniture kitchen **£20,000**



This large freestanding pantry unit has discreet bi-fold doors and conceals the couple's microwave. The two Victorian-style wooden bookcase shelves are height adjustable



Janette's Aga was central to the design and Mike carefully built out a chimney breast to frame it. The wicker laundry hamper is a great alternative to a conventional rubbish bin, for similar baskets try Wilkinson

**WE GET MOST USE OUT OF:** 'The Aga. I was really nervous until it was installed because it was bigger than anything we'd had before and I didn't have a backup. However, as well as being beautiful to cook on, it's great for drying clothes, not to mention the constant heat, especially in the evenings'

▶ The attention to detail, such as the apothecary-style drawers with crackle-glazed knobs, make the new kitchen feel like it has been here forever

▶ No self-respecting country kitchen should be without a dresser. The Hooles positioned theirs opposite the Aga to balance the scheme

